



Upgrading OmniSwitch 6850 Series Switches to 6.4.3.R01

Overview

This instruction sheet documents how to upgrade OmniSwitch 6850 Series Switches to 6.4.3.R01 firmware and software. The upgrade can be performed using the CLI or WebView. Alcatel-Lucent recommends using WebView to perform the upgrade. For upgrade instructions using the CLI, see [Upgrading with the CLI on page 12](#).

Note. These instructions can be used to upgrade a 6850 Series Switch from builds 6.3.4.R01 and later. To upgrade from an older build (e.g., 6.3.1.R01), Contact Customer Support. See [Upgrade/Downgrade Software Matrix on page 16](#) for more informaton.

Prerequisites

This instruction sheet requires that the following conditions exist, or are performed, before upgrading:

- The person performing the upgrade must:
 - be the responsible party for maintaining the switch's configuration
 - be aware of any issues that may arise from a network outage caused by improperly loading this code
 - understand that the switch must be rebooted and network users will be affected by this procedure
 - have a working knowledge of the switch to configure it to accept an FTP connection through the Network Interface (NI) Ethernet port.
- If the CLI is used, all CLI commands must be executed via a Console Port connection, not through a Telnet session. If you are performing a remote upgrade, the console port must be connected through a terminal server (via Telnet, PuTTY, etc.) in the same location as the switch you are upgrading.

Note. Do not proceed until all the above prerequisites have been met. Any deviation from these upgrade procedures will result in the malfunctioning of the switch. All steps in these procedures should be reviewed before beginning.

Upgrading with WebView

Upgrading OS6850 Series Switches to 6.4.3.R01 consists of the following steps. If you are performing a U-Boot/Miniboot upgrade, the steps must be performed in order. You must complete the image file upgrade **before** upgrading the U-Boot and Miniboot files.

- 1 Upgrading the Image Files.
- 2 Upgrading the U-Boot and Miniboot Files. If you are upgrading a 6850 Series Switch from Release 6.3.4.R01 or 6.4.2.R01, you do **not** have to upgrade the U-Boot and Miniboot files. The same U-Boot/MiniBoot files (6.3.4.265.R01) are compatible with the 6.4.3.R01 Release.

Note. To use the **USB Feature**, you must upgrade to U-Boot/Miniboot version **6.4.3.479.R01**.

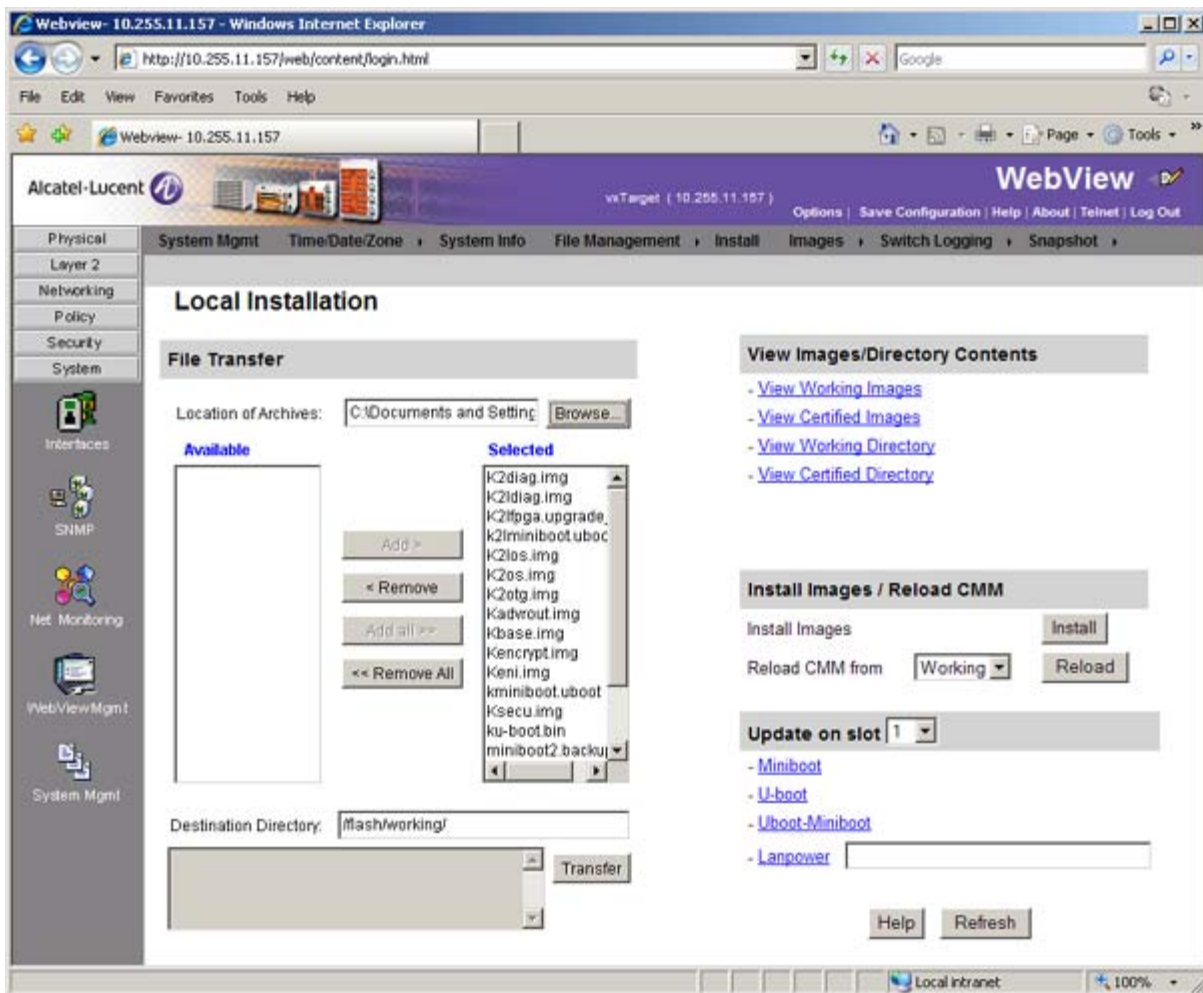
Upgrading the Image Files

Follow the steps below to upgrade the image files to 6.4.3.R01.

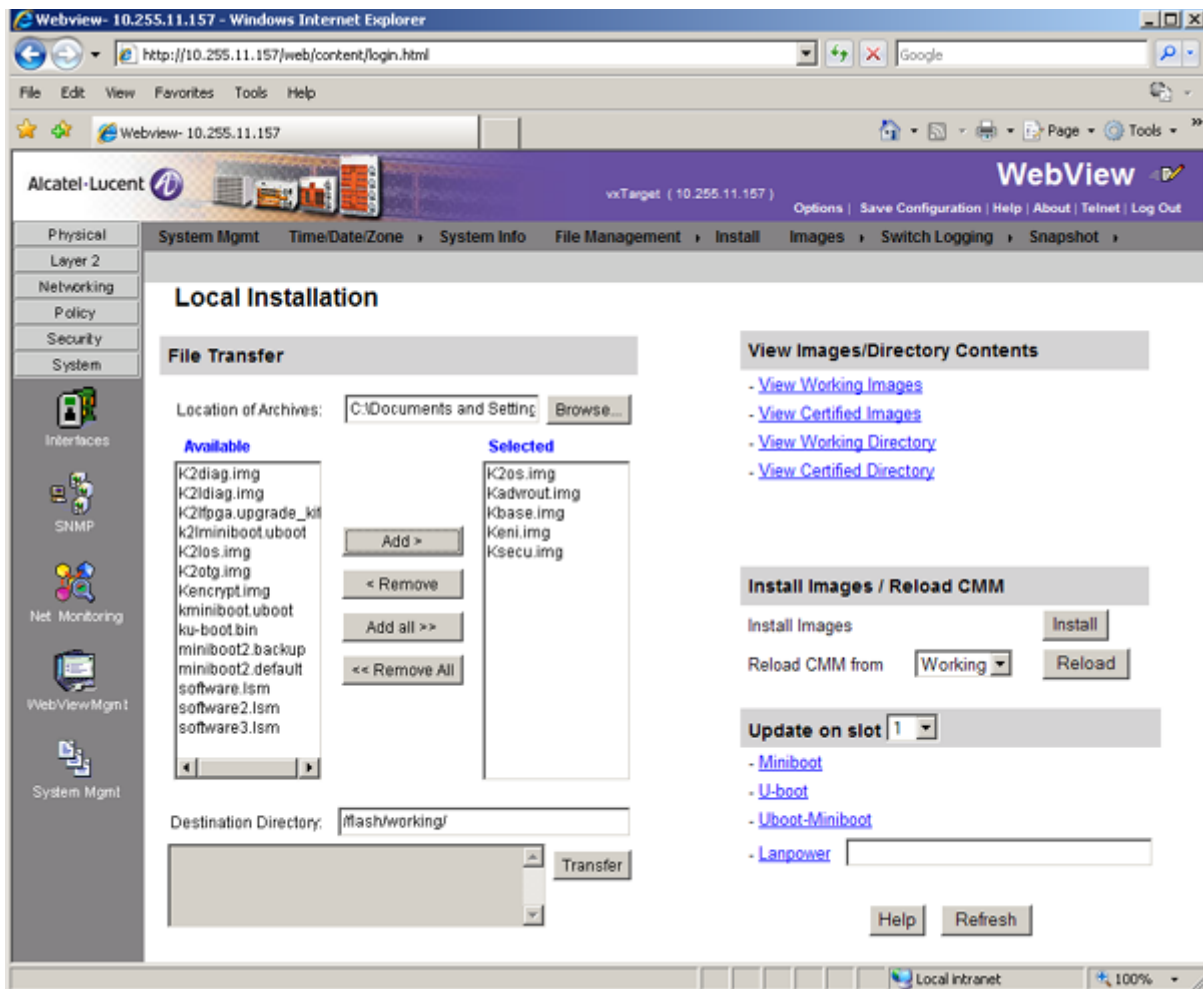
- 1 Download the 6.4.3.R01 upgrade files from the Alcatel-Lucent Service and Support web site to your PC.
- 2 Log into the switch through WebView. (In dual redundant configurations you must log into the primary switch).

Note. Before proceeding with the remaining steps, make sure that the switch's Web Management Inactivity Timer is set to at least 10 minutes (default setting is 4 minutes). To view and change the setting, go to the **Session Type Parameters** page by selecting **Security > ASA > Sessions > Configuration**.

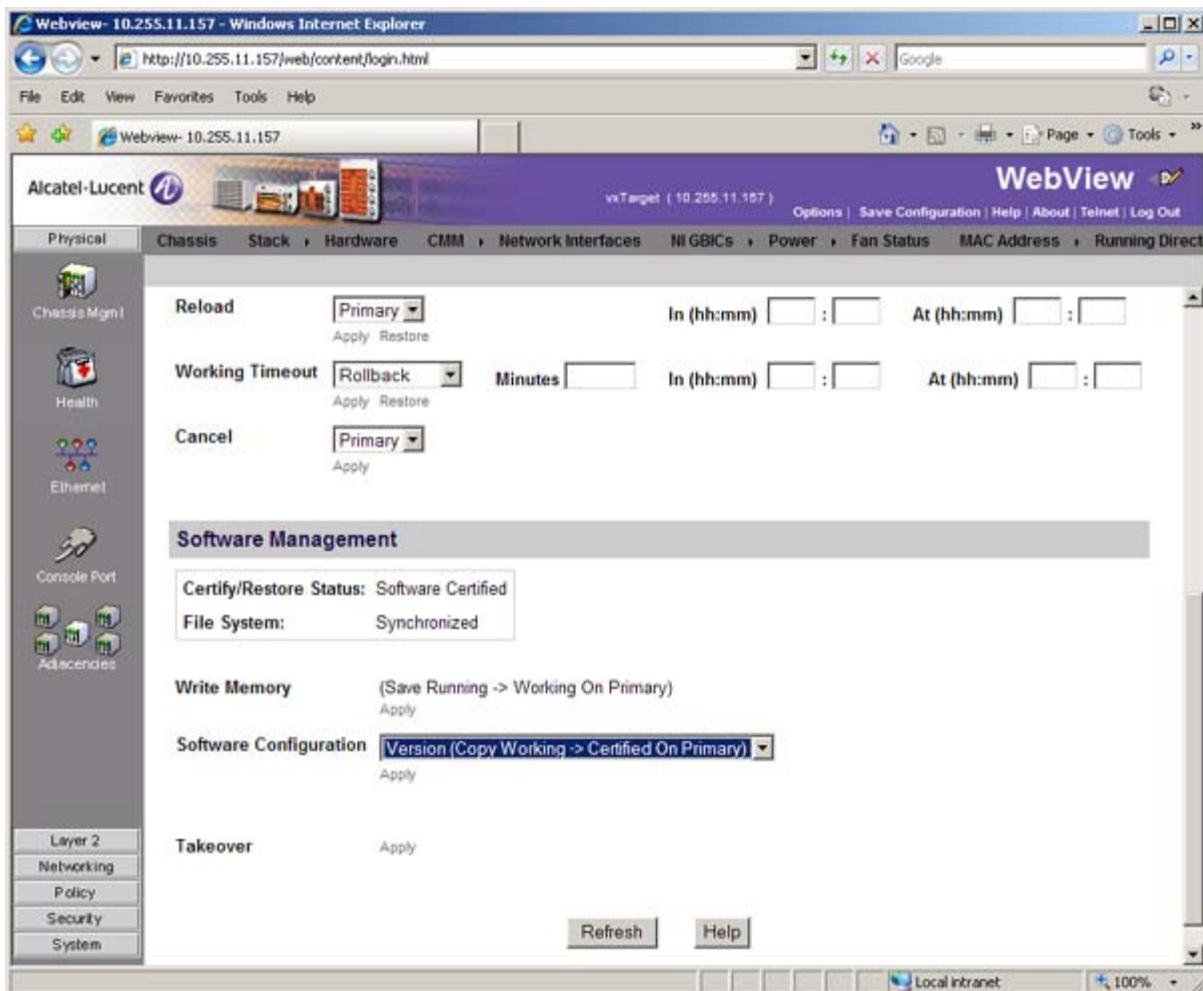
- 3 Select **System > System Mgmt > Install** to locate and FTP the 6.4.3.R01 image files that you downloaded in Step 1. Click on the **Browse** button to locate the files.
- 4 Select one of the files and click **Open**. All of the files will appear in the "Selected" area, as shown below.



- 5 Click on the **Remove All** button to move all of the files to the “Available” area; then select the following image files and click the **Add** button to move them to the “Selected” area as shown below: **K2os.img, Kadvrout.img, Kbase.img, Keni.img, Ksecu.img.**



- 6 Transfer the files to the **flash/working** directory. Make sure the **Destination Directory** is **flash/working**, then click the **Transfer** button. Wait until the process is complete (indicated in the area next to the **Transfer** button - “All files have been transferred successfully”).
- 7 Reload the switch from the Working Directory. In the “Install Images/Reload CMM” area, select **Working** in the **Reload CMM From** field, then click the **Reload** button. Click **OK** at the warning prompt. Wait until the process is complete.
- 8 After the CMM finishes rebooting, log into WebView.
- 9 Select **Physical > Chassis Mgmt > CMM > Management** as shown below.



- 10** In the **Software Management** field, select **Copy Working -> Certified on Primary** for standalone switches. For a stack, select **Copy Working -> Certified & Synchronize with Secondary** and click **Apply**.

The switch will synchronize files from the working directory with all other stacks (if applicable). This command should not be interrupted. Wait for the synchronization process to complete on all switches before proceeding to the next step.

Upgrading the U-Boot and Miniboot Files

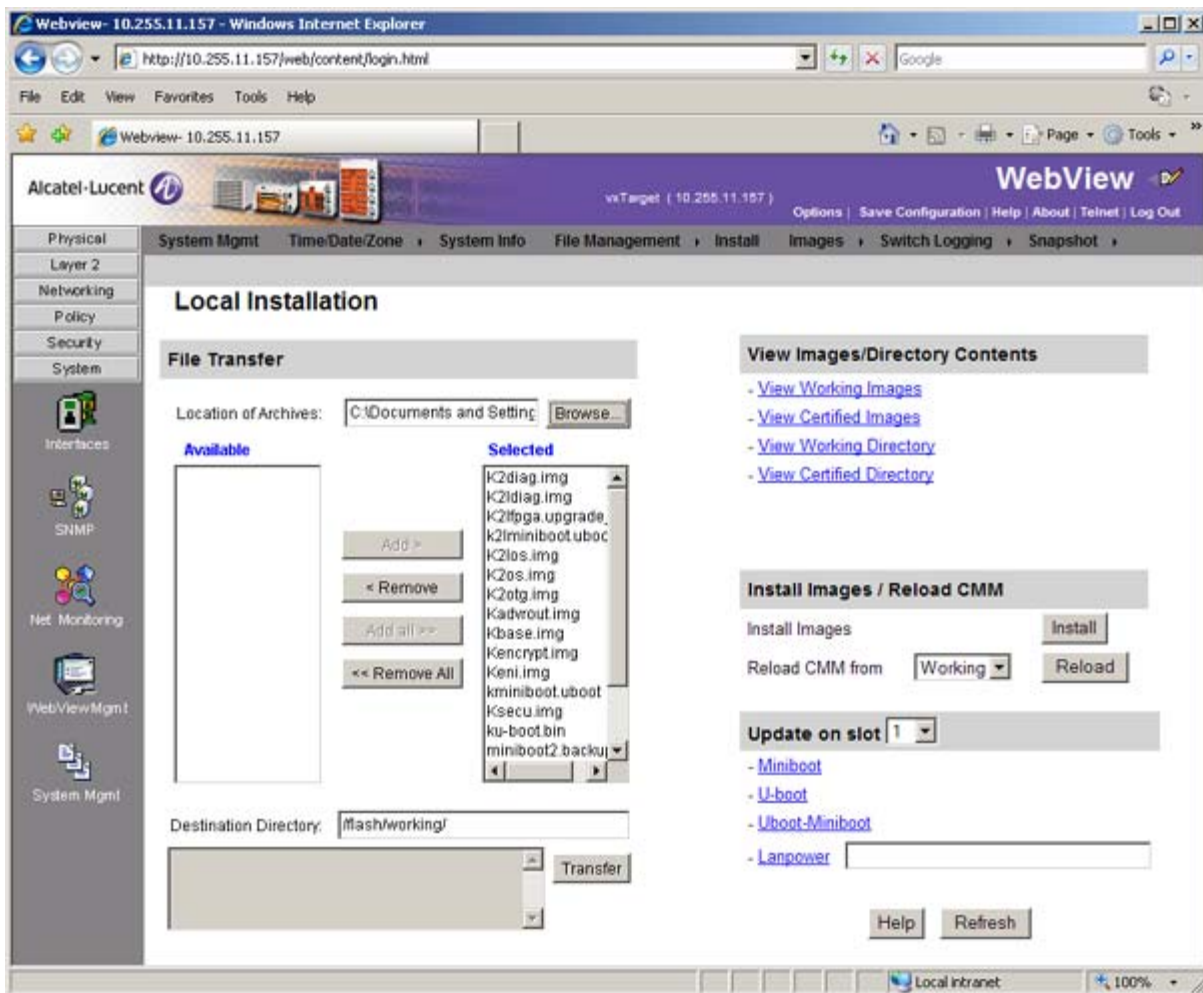
Follow the steps below to upgrade the U-Boot and Miniboot files, if necessary. A minimum U-Boot and Miniboot version of **6.3.4.265.R01** is required for the 6.4.3.R01 upgrade. If you are upgrading a 6850 Series Switch from Release 6.3.4.R01 or 6.4.2.R01, you do **not** have to upgrade the U-Boot and Miniboot files. The same U-Boot/MiniBoot files (6.3.4.265.R01) are compatible with the 6.4.3.R01 Release.

Note. To use the **USB Feature**, you must upgrade to U-Boot/Miniboot version **6.4.3.479.R01**.

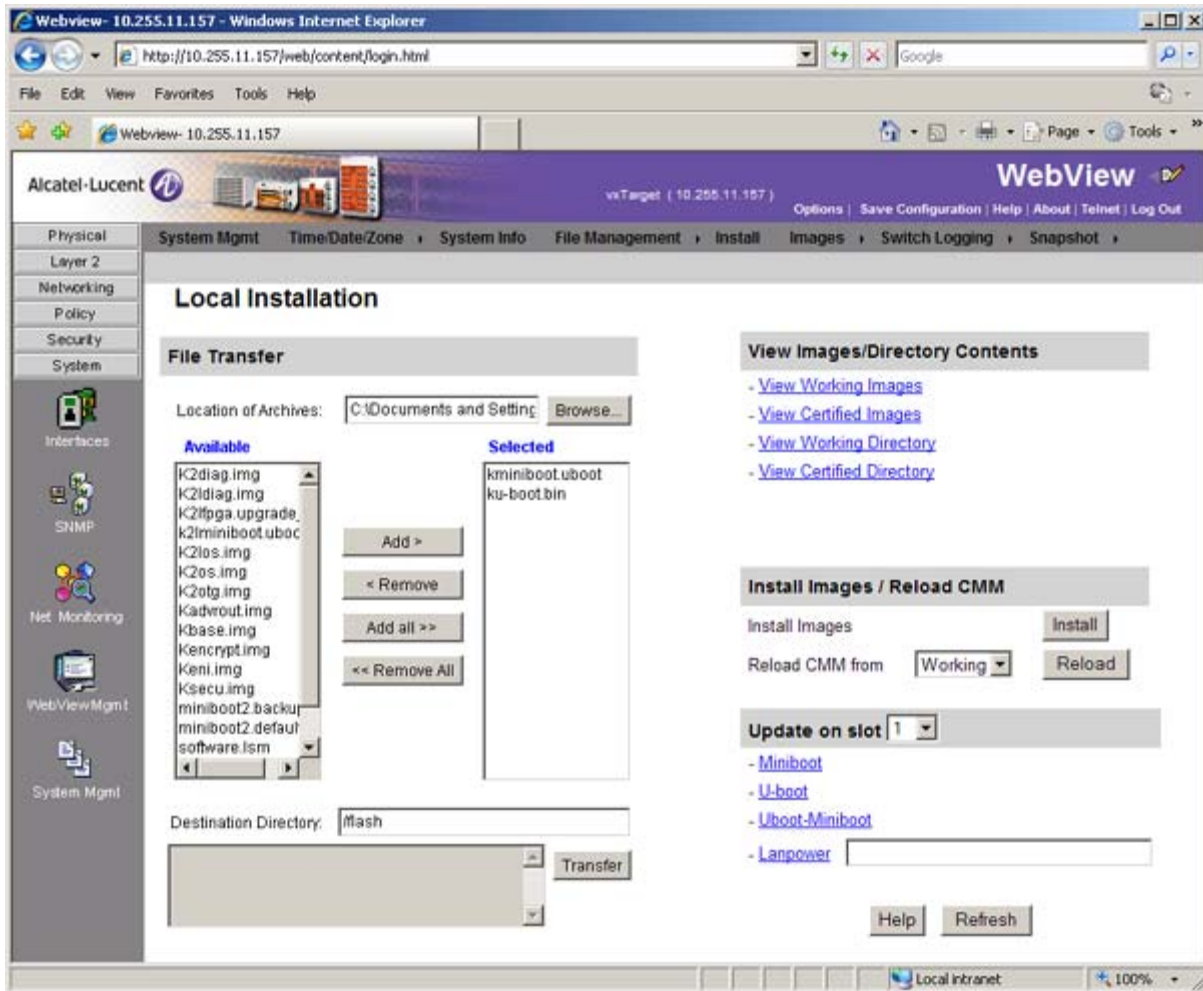
- 1** Download the applicable upgrade files from the Alcatel-Lucent Service and Support web site to your PC.
- 2** Log into the switch through WebView. (In dual redundant configurations you must log into the primary switch).

Note. If you have not already done so, make sure that the switch's Web Management Inactivity Timer is set to at least 10 minutes (default setting is 4 minutes). To view and change the setting, go to the **Session Type Parameters** page by selecting **Security > ASA > Sessions > Configuration**.

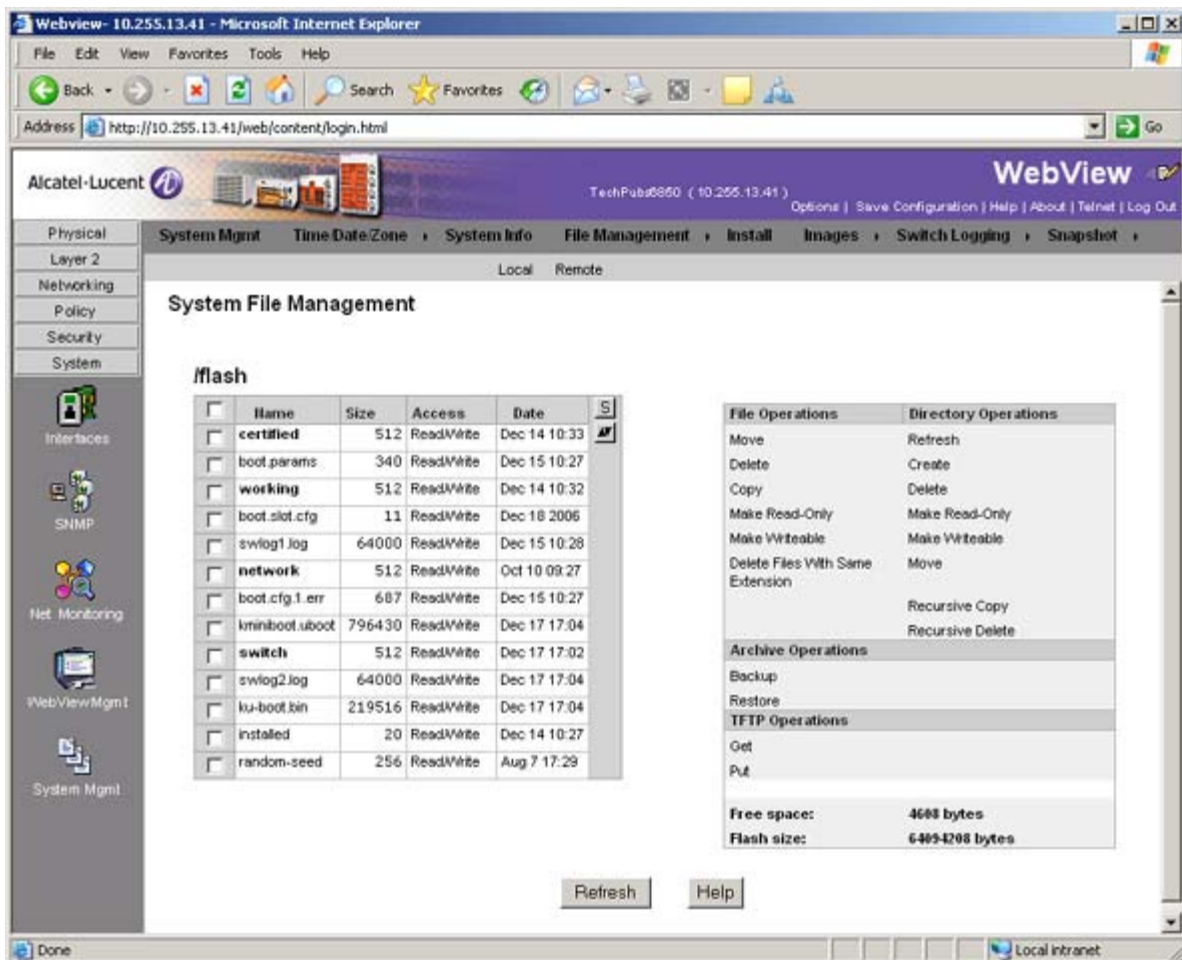
- 3** Select **System > System Mgmt > Install** to locate and FTP the 6.4.3.R01 image files that you downloaded in Step 1. Click on the **Browse** button to locate the files.
- 4** Select one of the files and click **Open**. All of the files will appear in the "Selected" area, as shown below.



- 5 Click on the **Remove All** button to move all of the files to the “Available” area, then select the **ku-boot.bin** file and the **kminiboot.uboot** file and click the **Add** button to move them to the “Selected” area as shown below.



- 6 Make sure the **Destination Directory** is **/flash**, then click the **Transfer** button. Wait until the process is complete (indicated in the area next to the **Transfer** button - “All files have been transferred successfully”).
- 7 In the “Update on slot” area, select the slot number of the switch you want to update (or select “All” to update all switches in the stack), click on **Uboot-Miniboot**, then click **OK** at the confirmation prompt. The upgrade progress is indicated in the upper right corner of the screen. When the upgrade is complete, the following message appears “set operation finished successfully.”
- 8 Reload the switch from the Working Directory. In the “Install Images/Reload CMM” area, select **Working** from the **Reload CMM From** field, then click the **Reload** button. Click **OK** at the warning prompt. Wait until the process is complete.
- 9 After verifying that the upgrade was successful (see [Verifying the Upgrade with WebView on page 9](#)), delete the **miniboot.uboot** and **ku-boot.bin** files from the Flash Directory by selecting **System > System Mgmt > File Management > Local**, as shown below.

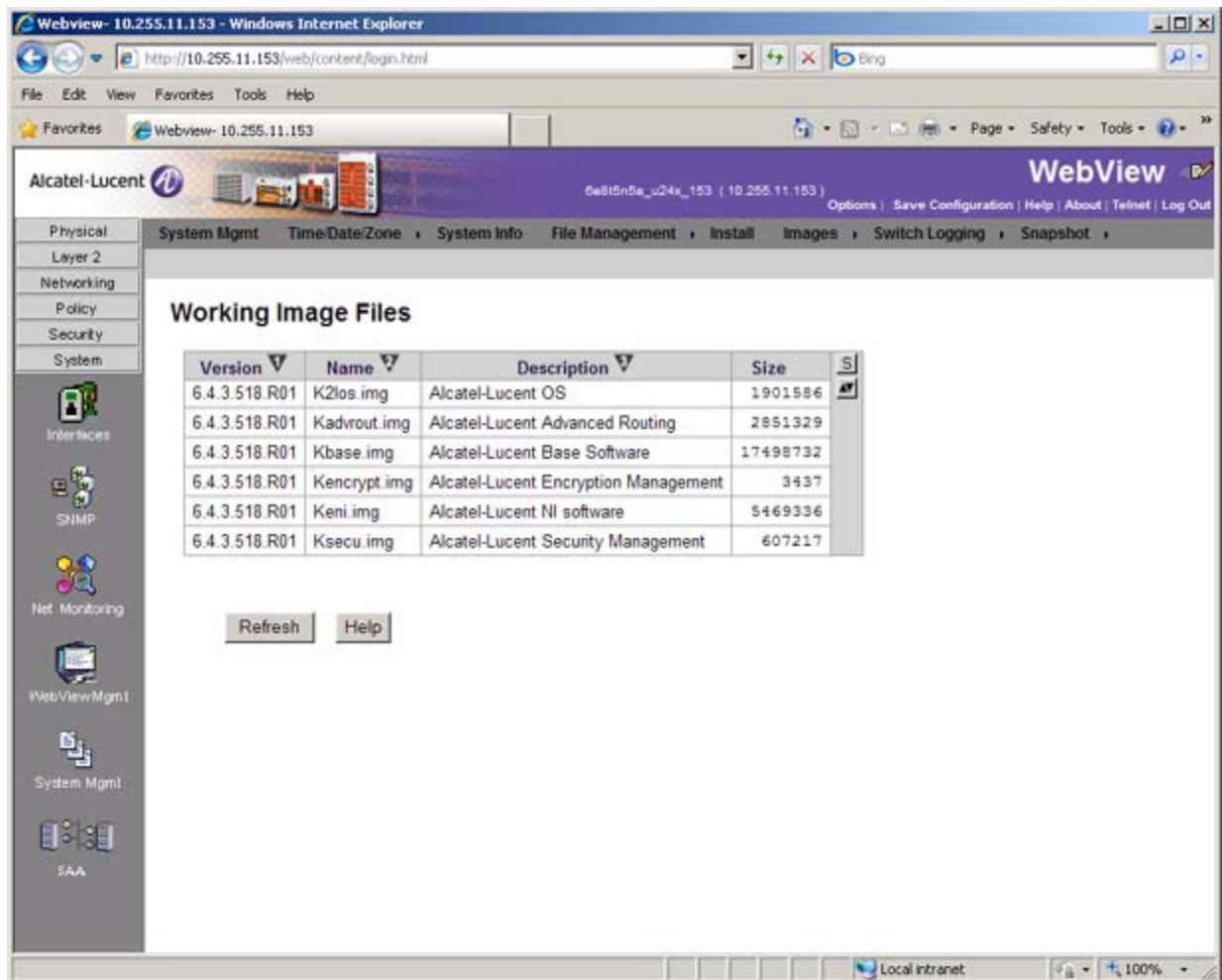


- 10 Check the box next to the ku-boot.bin file, select **Delete** in the **File Operations** box, then click **OK** at the confirmation prompt. Repeat to delete the kminiboot.uboot file.

Verifying the Upgrade with WebView

Verifying the Software Upgrade

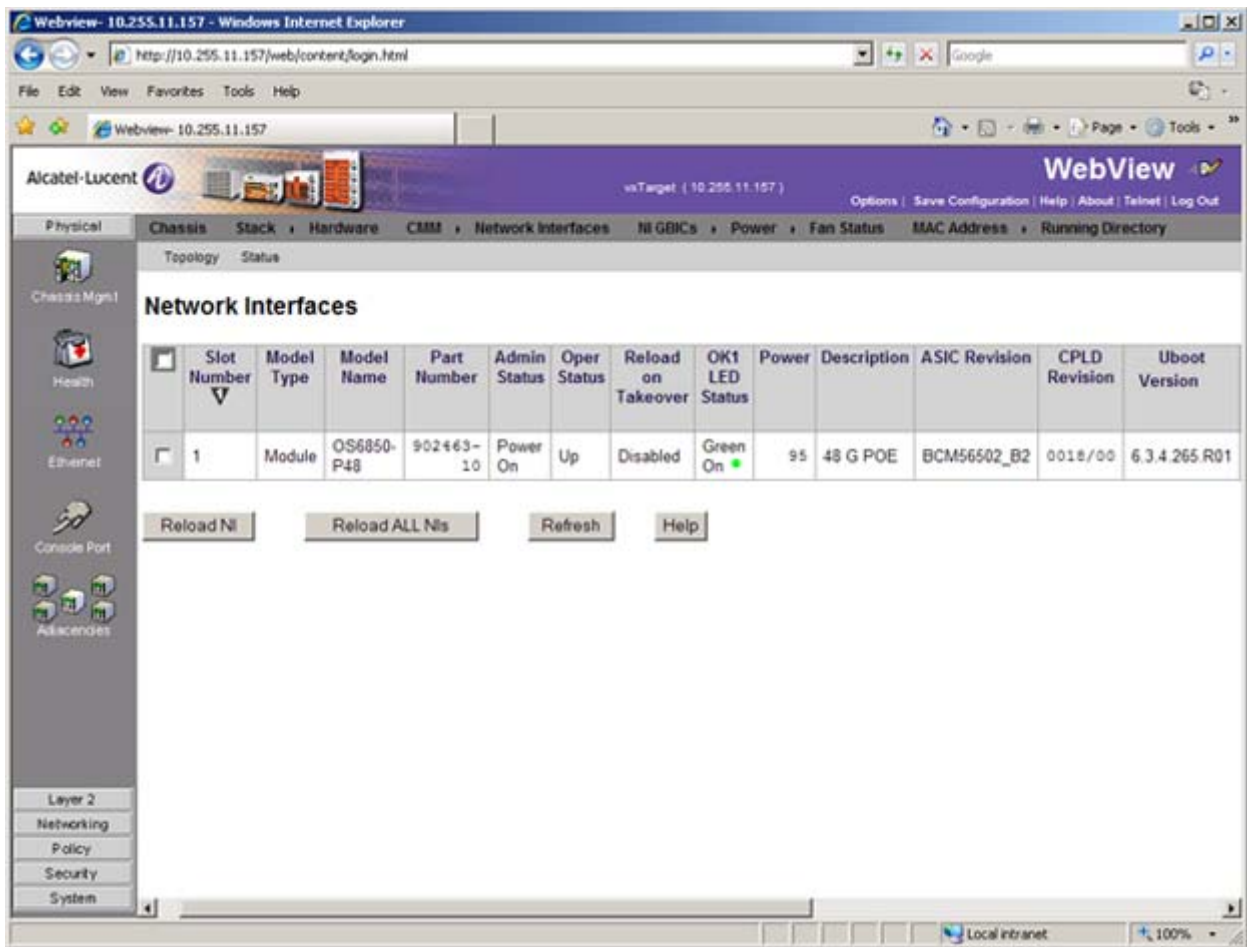
To verify that the software was successfully upgraded, go to the **Loaded Image Files** page by selecting **System > System Mgmt > Images > Loaded Images** as shown below.



In addition, you should also select **System > System Mgmt > Images > Images in Certified** and **System > System Mgmt > Images > Images in Working** to verify that Certified and Working directories were successfully upgraded.

Verifying the U-Boot and Miniboot Upgrade

To verify that the U-Boot and Miniboot files were successfully upgraded, go to the **Network Interfaces** page by selecting **Physical > Chassis Mgmt > Network Interfaces**, as shown below. Scroll right to the **Uboot Version** and **Miniboot Version** columns for the switch(es). Information for each switch in a stack (if applicable) is displayed.



Upgrading with the CLI

Upgrading OS6850 Series Switches to 6.4.3.R01 consists of the following steps. If you are performing a U-Boot/Miniboot upgrade, the steps must be performed in order. You must complete the image file upgrade **before** upgrading the U-Boot and Miniboot files.

- 1 Upgrading the Image Files.
- 2 Upgrading the U-Boot and Miniboot Files. If you are upgrading a 6850 Series Switch from Release 6.3.4.R01 or 6.4.2.R01, you do **not** have to upgrade the U-Boot and Miniboot files. The same U-Boot/MiniBoot files (6.3.4.265.R01) are compatible with the 6.4.3.R01 Release.

Note. To use the **USB Feature**, you must upgrade to U-Boot/Miniboot version **6.4.3.479.R01**.

Upgrading the Image Files

Follow the steps below to upgrade the image files to 6.4.3.R01.

- 1 Download the 6.4.3.R01 upgrade files from the Alcatel-Lucent Service and Support web site to your PC.
- 2 FTP the following 6.4.3.R01 image files to the **/flash/working** directory of the primary switch:
K2os.img, Kadvrout.img, Kbase.img, Keni.img, Ksecu.img.
- 3 Log into the switch. In dual redundant configurations you must log into the primary switch.
- 4 Reload the switch from the working directory.

```
-> reload working no rollback-timeout
```
- 5 After the switch finishes rebooting, log into the switch.
- 6 Copy the image files from the Working Directory to the Certified Directory.
 - If you have a **single CMM** switch enter:

```
-> copy working certified
```
 - If you have **redundant CMMs** enter:

```
-> copy working certified flash-synchro
```

The switch will copy the files from the Working to the Certified Directory and synchronize the CMMs (if applicable). This command should not be interrupted.

Upgrading the U-Boot and Miniboot Files

Follow the steps below to upgrade the U-Boot and Miniboot files, if necessary. A minimum U-Boot and Miniboot version of **6.3.4.265.R01** is required for the 6.4.3.R01 upgrade. If you are upgrading a 6850 Series Switch from Release 6.3.4.R01 or 6.4.2.R01, you do **not** have to upgrade the U-Boot and Miniboot files. The same U-Boot/MiniBoot files (6.3.4.265.R01) are compatible with the 6.4.3.R01 Release.

Note. To use the **USB Feature**, you must upgrade to U-Boot/Miniboot version **6.4.3.479.R01**.

- 1** Download the applicable upgrade files from the Alcatel-Lucent Service and Support web site to your PC.
- 2** FTP the **ku-boot.bin** and **kminiboot.uboot** files to the **/flash** directory on the primary switch.
- 3** Execute the following CLI command to update the Miniboot and U-Boot files on the switch(es) (can be a standalone or stack).

```
-> update uboot-miniboot
```

Sample output for "update uboot-miniboot" for a stack of 2

```
WED APR 7 10:58:52 : SYSTEM (75) info message:
+++ ---->SSACTION_UPDATE_UBOOT_MINIBOOT
WED APR 7 10:58:52 : CSM-CHASSIS (103) info message:
+++ == CSM == Update bootrom on all slots
+++ == CSM == sysUpdate begin
WED APR 7 10:58:54 : SYSTEM (75) info message:
+++ NI 1 software update started
Erasing flash..
Writing flash..
Done
WED APR 7 10:58:59 : SYSTEM (75) info message:
+++ NI 1 software update completed -- file /flash/ku-boot.bin copied
+++ NI 1 software update started
Erasing flash.....
Writing flash.....
Done
WED APR 7 10:59:14 : SYSTEM (75) info message:
+++ NI 1 software update completed -- file /flash/kminiboot.uboot copied
+++ NI 2 software update started
WED APR 7 10:59:19 : SYSTEM (75) info message:
```

```

+++ NI 2 software update completed -- file /flash/ku-boot.bin copied
WED APR 7 11:01:23 : CSM-CHASSIS (103) info message:
+++ == CSM == sysUpdate end
+++ == CSM == timer_r:simplex---- session end ----
+++ == CSM == UPDATE COMPLETED

```

- 4 When the “UPDATE COMPLETED” message appears, delete the miniboot and u-boot files from the /flash directory, then reload the switch:

```
-> reload working no rollback-timeout
```

The upgrade is now complete. See [Verifying the Upgrade with the CLI on page 14](#) for information on verifying the upgrade.

Verifying the Upgrade with the CLI

Verifying the Software Upgrade

To verify that the software was successfully upgraded to 6.4.3.R01, use the **show microcode** command as shown below. The display below shows a successful image file upgrade.

```

-> show microcode

```

Package	Release	Size	Description
Kbase.img	6.4.3.518.R01	17129458	Alcatel-Lucent Base Software
Kadvrout.img	6.4.3.518.R01	2810592	Alcatel-Lucent Advanced Routing
K2os.img	6.4.3.518.R01	1744629	Alcatel-Lucent OS
Keni.img	6.4.3.518.R01	5604310	Alcatel-Lucent NI software
Ksecu.img	6.4.3.518.R01	606099	Alcatel-Lucent Security Management
Kencrypt.img	6.4.3.518.R01	3437	Alcatel-Lucent Encryption Management

Verifying the U-Boot and Miniboot Upgrade

To verify that the U-Boot and Miniboot files were successfully upgraded, use the **show ni** command as shown below. Information for each switch in a stack (if applicable) is displayed.

```
-> show ni

Module in slot 1

  Model Name:                OS6850-P48,
  Description:               48 G POE,
  Part Number:               902463-10,
  Hardware Revision:         04,
  Serial Number:             G0650243,
  Manufacture Date:          FEB 21 2006,
  Firmware Version:          ,
  Admin Status:              POWER ON,
  Operational Status:        UP,
  Power Consumption:         95,
  Power Control Checksum:    0x23a5,
  CPU Model Type   :         Motorola MPC8248,
  MAC Address:              00:d0:95:e2:6d:24,
  ASIC - Physical 1:        BCM56502_B2,
  ASIC - Physical 2:        BCM56504_B2,
  FPGA - Physical 1:        0018/00,
  UBOOT Version :         6.3.4.265.R01,
  UBOOT-miniboot Version : 6.3.4.265.R01,
  POE SW Version :          n/a
```

Upgrade/Downgrade Software Matrix

Refer to the matrix below for software compatibility when upgrading/downgrading a 6850 Series Switch to/from Build 6.4.3.R01. For more information, contact Customer Support.

I = Image Files

F = U-Boot/Miniboot

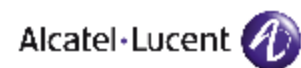
Yes = You can upgrade/downgrade to the next build.

No = You cannot upgrade/downgrade to the next build.

N/A = Not applicable.

Upgrade/Downgrade Matrix						
6.4.3.R01 GA						
I = 6.4.3.R01 GA						
F = 6.3.4.265.R01						
Build and Supported Software Versions For Each Upgrade						
	6.1.2 GA	6.1.3 GA	6.1.5 GA	6.3.1 GA	6.3.4 GA	6.4.2 GA
	I = 6.1.2.R01 GA	I = 6.1.3.R01 GA	I = 6.1.5.R01 GA	I = 6.3.1.R01 GA	I = 6.3.4.R01 GA	I = 6.4.2.R01 GA
	F = 6.1.2.49.R03	F = 6.1.3.601.R01	F = 6.1.5.354.R01	F = 6.1.5.479.R01	F = 6.3.4.265.R01	F = 6.3.4.265.R01
Model	Contact Support	Contact Support	Contact Support	Contact Support	Yes	Yes
6850	Contact Support	Contact Support	Contact Support	Contact Support	Yes	Yes

Note. Hardware is only backward compatible down to the software that originally supported it (e.g., 6.1.2.R01 for the 6850). Also, when downgrading, make sure to load the applicable U-Boot/Miniboot files. For more information, contact Customer Support.



Alcatel-Lucent
 26801 West Agoura Road
 Calabasas, CA 91301
 (818) 880-3500 FAX (818) 880-3505

US Customer Support: (800) 995-2696
 International Customer Support: (818) 878-4507
 Internet: <http://eservice.ind.alcatel.com>